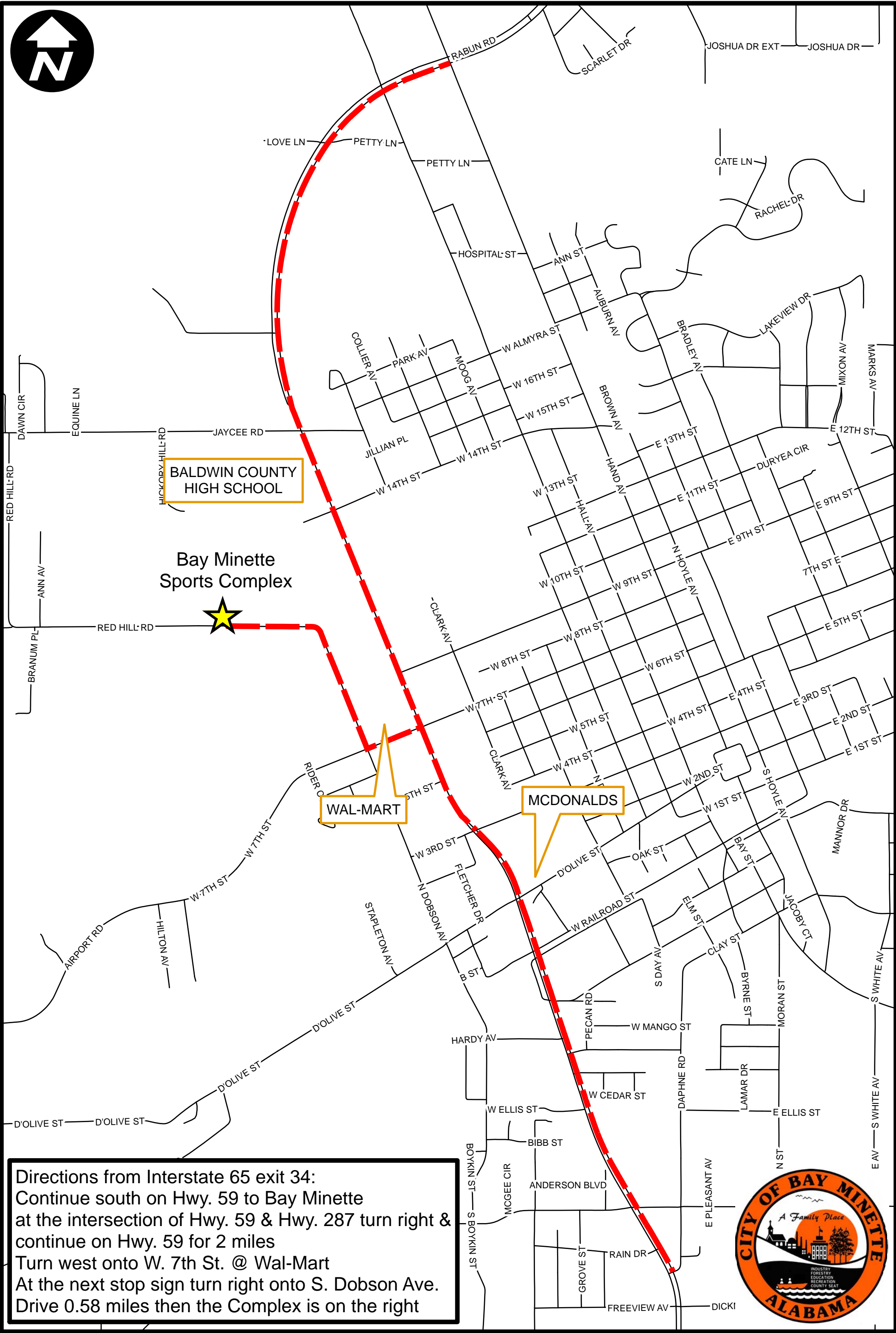


Bay Minette Sports Complex Route



BALDWIN COUNTY HIGH SCHOOL

Bay Minette Sports Complex

WAL-MART

MCDONALDS

Directions from Interstate 65 exit 34:
Continue south on Hwy. 59 to Bay Minette
at the intersection of Hwy. 59 & Hwy. 287 turn right &
continue on Hwy. 59 for 2 miles
Turn west onto W. 7th St. @ Wal-Mart
At the next stop sign turn right onto S. Dobson Ave.
Drive 0.58 miles then the Complex is on the right

